

# Ignition Coil

## TYPE:TR04-S011

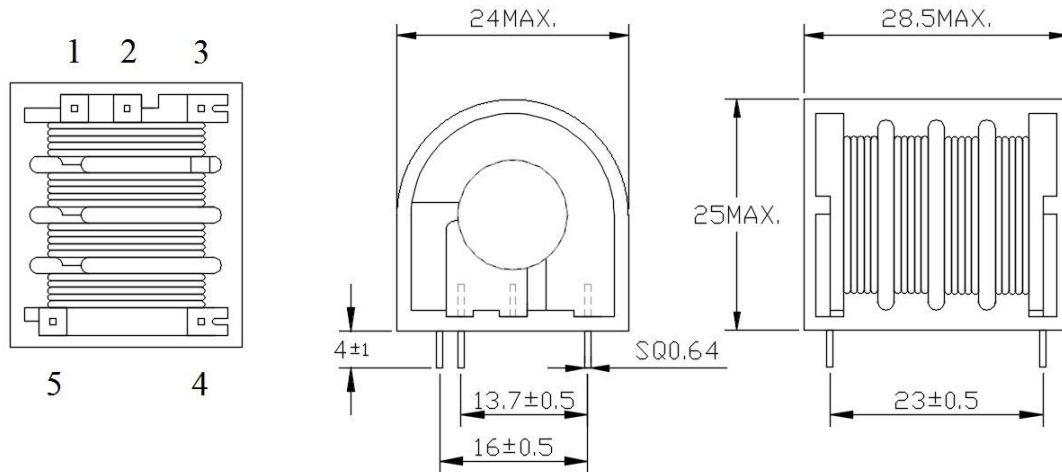
### Applications:

- GAS IGNITER.
- AIR CLEANER.
- OIL IGNITER.
- GAS POWERED NAILER.

※Remark:Below here which specific could depend on customized specifications are acceptable.

MECHANICAL DIMENSION:

UNIT mm



P/N	L <sub>pri.</sub> (PIN1→PIN5)	L <sub>sec.</sub> (PIN4→PIN3)	DCR <sub>pri.</sub> (PIN1→PIN5)	DCR <sub>sec.</sub> (PIN4→PIN3)	TURNS RATIO	WEIGHT
JC-109031	23μH±20%	325mH±15%	98mΩ MAX.	430Ω MAX.	1:147	31 g
JC-109032	23μH±20%	320mH±15%	98mΩ MAX.	450Ω MAX.	1:147	31 g
JC-109033	23μH±20%	600mH±15%	98mΩ MAX.	1200Ω MAX.	1:200	32 g
JC-109034	33μH±20%	95mH±15%	80mΩ MAX.	160Ω MAX.	1:56	31 g
P/N	L <sub>pri.</sub> (PIN1→PIN2)	L <sub>sec.</sub> (PIN4→PIN3)	DCR <sub>pri.</sub> (PIN1→PIN2)	DCR <sub>sec.</sub> (PIN4→PIN3)	TURNS RATIO	WEIGHT
JC-109035	26μH±20%	355mH±15%	140mΩ MAX.	750Ω MAX.	1:136	31 g

## JET CHAM ENTERPRISE CO.,LTD

ADDRESS: 3F. NO.41 CHIAU AN ST. CHUNG HO DIST .NEW TAIPEI CITY, TAIWAN R.O.C.

OFFICE TEL:886-2-29253396 ~ 7 FAX.:886-2-29288877

FACTORY TEL:886-2-22447326 ~ 7 FAX.:886-2-22447328

E-mail: [jetcham@ms35.hinet.com](mailto:jetcham@ms35.hinet.com) / [jetcham.coil@msa.hinet.net](mailto:jetcham.coil@msa.hinet.net)